



Solo VPE

Variable.Pathlength.Extension

High Concentration...

Small Volume...



Diluting

C Technologies, Inc.'s new **Solo-VPE** variable pathlength extension enables UV/Vis measurements of varying solution concentrations without the need for dilutions. The closed loop system dynamically changes the measurement pathlength based upon user specified thresholds and criteria. The device automatically adjusts the optical pathlength from 0.01 mm to 20mm in 0.005 mm increments, allowing the user to determine the peak wavelength(s), absorbance or required dilution ratios for any given solution. The disposable tip provides for quick changes without the risk of carryover.

4000 cuvettes at your fingertips!

Specifications

- Available Pathlength: .01 – 20mm
(Longer pathlengths available soon)
- Min. Pathlength Steps: 0.005 mm
- Pathlength Accuracy: $\pm 1\%$ at .5mm
- Pathlength Repeatability: $> 99\%$
- Absorbance Accuracy: 2%
(1mm – 10mm pathlength)
- Physical Dimensions: 8.5" x 8.5" x 12"
- Sample Vessels: UV bottom
(Various sizes available)
- Disposable probe tip
- Used with Cary 50 Spectrophotometer
- Wavelength Range: 190 – 1100 nm
- Single Use Fibrette tip
- No Carryover
- Solo VPE Software Included

 **C TECHNOLOGIES, INC.**

757 Route 202/206
Bridgewater, New Jersey 08807
(p) 908.707.1009 (f) 908.707.1030

www.solovpe.com
info@ctechnologiesinc.com

Patent Pending

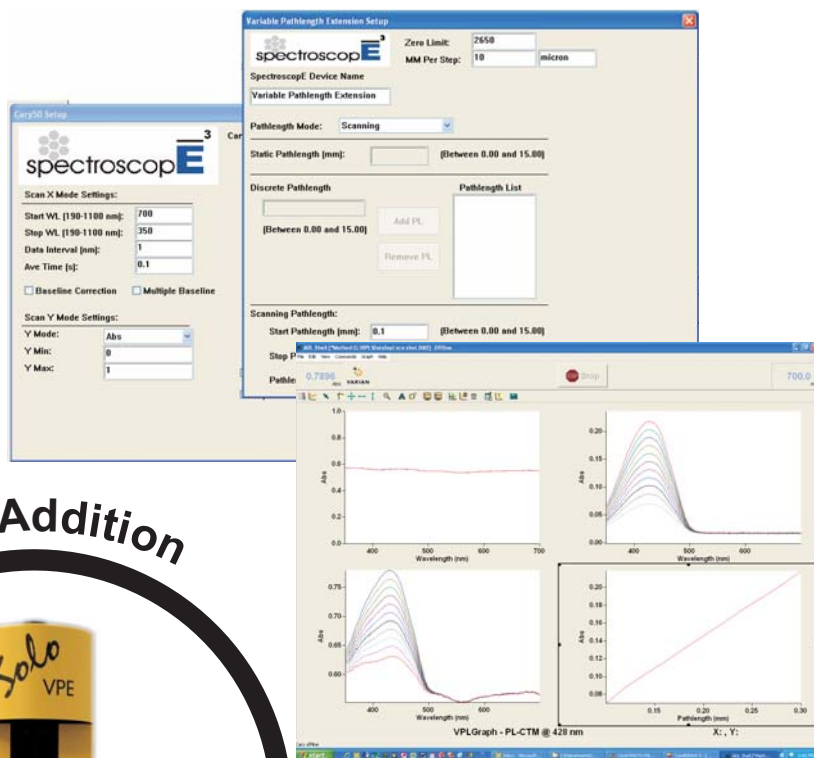
Features & Utilities

Pathlength Modes:

- Specific Pathlength
Single pathlength operation
- Discrete Pathlengths
Multiple user specified pathlengths
- Pathlength Scanning
User Defined: Start PL, End PL, PL Step

Software Utilities:

- Dilution Helper
Identifies required dilution ratio
- Concentration Helper
Confirms actual concentration
- Peak Finder
Identifies wavelength peaks in scan



New Addition



Extensions

- Well Plate Reader
- Microscope Adapters
- Dissolution Systems
- Variable Pathlength
- Vacuum Feedthroughs
- Cuvette Couplers
- Fiber Optic Probes
- Micro Volume

spectroscop **E**³
Suite

Engine



(n) (spěk-trõs'kə-pē) a collection of tools designed to expand and extend measurement capabilities with its UV/Vis engine

Expansion

Cassini
Multiplexer



C TECHNOLOGIES, INC.
757 Route 202/206
Bridgewater, New Jersey 08807
(p) 908.707.1009 (f) 908.707.1030
www.ctechnologiesinc.com